

ELLIOT BROWN



*The
Kimmeridge*

ELLIOT BROWN



THANK YOU FOR CHOOSING AN
ELLIOT BROWN WATCH

ELLIOT BROWN



We build watches designed from scratch to perform and to last; watches that can be worn for years, that'll take the knocks, develop character, and become part of your story.

Your watch has been engineered with years of specialist knowledge and experience, and has been rigorously tested to ensure that it'll serve you well.

5 YEAR GUARANTEE

Our warranty is honest and straightforward: if your watch develops a fault within 5 years of the original date of purchase because of a manufacturing defect, we'll put it right for you free of charge.

Our warranty doesn't cover crystals, batteries, straps and buckles, theft, loss, damage resulting from misuse, negligence, accidents, improper use (blows, shocks, crushing, dents, scratches etc.), 3rd party repairs/servicing, or wear and tear.

We don't warranty crystals and straps because although we build and test our watches up to a standard, the lifespan of these components is dependent on the conditions and type of wear & tear the watch is subjected to.

To arrange service or repairs, please call us on 01202 338600 or email us at service@elliottbrownwatches.com Please note that you're responsible for any costs involved in returning your watch to us but we'll return it to you at our expense.

STRAP FITTING AND ADJUSTMENT

TO CHANGE YOUR STRAP:

You can change the strap with a single screwdriver. Insert the screwdriver into the end of the strap bar and carefully unscrew the bar anticlockwise, putting some pressure on the screwdriver and making sure it's perpendicular to the bar so it doesn't slip out.

The bar will be stiff to turn because it has a drop of thread locking compound applied to prevent it working loose and because it's a snug fit in the strap. Undo the bar all the way until you can

see the end of the threaded section is clear of the watch and then pull the bar free and remove the strap.

If you feel you need to give it a gentle pull with a pair of pliers, protect the thread of the strap bar by wrapping a cloth around it first.

To fit the new strap, locate the end of the strap against the watch and insert the strap bar. You might need to give the bar a wiggle to align it with the hole in the strap.

Gently push the bar through the strap until the screw thread on the bar reaches the watch. Now carefully screw the bar back into the watch using the screwdriver, ensuring the bar isn't cross-threaded. As soon as the bar starts to 'nip up' be careful not to overtighten it.

ADJUSTING 3 LINK METAL BRACELET LENGTH:

Using the screwdriver provided, unscrew the bars that hold the bracelet

links together and remove as many links as you need to get a comfy fit, remembering to remove links equally from each side of the bracelet.

If you need to fine-tune the fit, move the spring-bar into the alternate pair of holes in the clasp, which provide half a link of adjustment. If you need to add more links, get in touch, and we'll send you as many as you need.

If you need to extend the bracelet, press both tapered buttons on the sides of the clasp simultaneously to slide the

extension section out of the clasp. It slides out in two stages and locks in both; the first stage is designed to extend the strap by 4mm to provide a more comfortable fit in warm weather, or to fit over a summer wetsuit.

The second stage extends the strap by 8mm.

To slide the extension back in, squeeze both tapered buttons simultaneously and slide the extension back into the clasp.

ADJUSTING MILANESE MESH BRACELET LENGTH:

Open the safety catch, and then open the catch with the EB shield logo on it. Open the bracelet and lie the watch and bracelet flat.

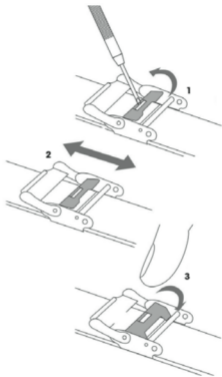
Using the screwdriver supplied, lift the plate with the notch in it by levering gently, tilting the screwdriver in the direction of the arrow. See illustration 1

On the other side of the bracelet, note the rectangular alignment marks; the

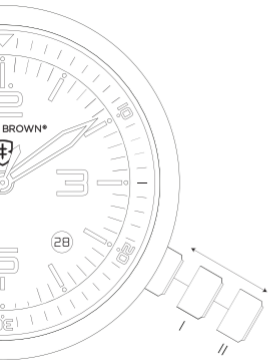
buckle will only lock in place into these.
Slide the buckle along the mesh to adjust it.
See illustration 2.

Then press on the plate with your fingertip to lock it closed and fix the length of the bracelet. If the plate won't click closed, ensure it's lined up with the rectangular marks: press lightly on the plate and slide it until you can feel it settle on the marks and then press it closed again.

Put the watch on, hook the clasp around the round bar, click the catch with the EB shield on it closed, and then click the safety catch closed.



ADJUSTING TIME AND DATE



DATE

Pull the crown gently out to the first click, and turn it until the calendar shows yesterday's date.

TIME

Now pull it out gently to the next click, and adjust the time so that the calendar flicks over to today's date. Your watch is now at midnight last night. Carry on winding the hands forwards to the correct time then push the crown all the way in when you're done.

If you're setting your watch after 12 noon, you will first need to wind the hands round 12 hours, then to the correct PM time.

Try not to adjust the time between 9pm and midnight, as the calendar is starting to change the date between those times.

The seconds-hand stops when the crown is pulled out to the second click.

This extends the battery life if you need to store your watch long-term.

CARING FOR YOUR WATCH

It's tough, but it's still assembled from precision components built to exacting tolerances, so avoid really hard impacts. Give it a rinse if (and when) it gets muddy or is used in salt water, to keep the moving components like the bezel working at their best, and then dry it off.

As with anything made of decent leather, it's best not to get leather straps soaking wet too often, swap it for an alternative strap instead.

Don't be afraid to feed your leather to stop it drying out and becoming brittle.

If you think your watch has developed a problem, get in touch so that we can arrange to check it over, please don't remove the case-back yourself, so that we can examine it in exactly the same condition as when the fault arose.

Your watch is sealed against dust and moisture, so it's wise to have it pressure-tested every few years to ensure the seals are ok.

HIGHLIGHTS

If you're interested in what makes your Elliot Brown tick, here are the highlights:

Every part of your watch-case is made from 316L stainless steel. 316L is brilliant for watch cases - it's really tough, takes all our detailing beautifully, and is hypo-allergenic, so no nasty rashes.

316L is often called marine-grade stainless steel, because it's unaffected by sea water, even long-term. Give it a rinse and it's as good as new.

The case back is bolted down not screwed on, so the shock-absorbing movement holder is perfectly secured in exactly the right place to do its best work. Bolting the back on also ensures that the logo is always vertical and provides the best possible sealing solution.

Your watch has been manufactured to ISO 2281 for water-resistance, and although it's not required for ISO 2281, every single one of our watches is pressure-tested individually to 150m/15ATM, twice in air pressure.

Then it undergoes a 200m pressure test in water for 10 minutes to make **absolutely** sure that the manufacturing tolerances and assembly meet our **quality** standards.

The crown is **knurled** so it's **always** easy to use, even when you and your watch are wet, **cold**, or muddy, but has a smooth, radiused edge so it won't wreck the cuff of your favourite shirt or wetsuit.

We use crowns with **triple-seals** rather than screw-down crowns, because you

can't forget to screw down a push-in crown. Even in the adjust (out) position, the crown is **still** waterproof to the same **level** as when it's pushed in.

The movement is **located** inside the case by a **stainless steel** movement housing surrounded by shock-absorbing **elastomers** that minimise the amount of vibration and shock transmitted to the movement, so there's **less** chance of it getting damaged.

All our watches exceed the **ISO 1413** standard for shock-resistance and we

prove this by striking a few watches from every production run with a 3kg steel pendulum mallet that applies a force of circa 5000G at the point of impact. It's rather like hitting the watch with a golf club.

The crystal is made from toughened mineral glass with an anti-reflective coating.

It's this anti-reflective coating that produces the cool blue tint you can sometimes see, and we only apply it to the inside of the glass, so you don't get

annoying fingerprints and scratches in the coating.

We use mineral crystal because it'll withstand shattering far better than the alternative sapphire crystal. It's not quite as scratch resistant but you can't use a watch with a broken crystal.

The dial is cut from solid brass, detailed in the attractive colourway you chose (good choice by the way - very 'you') and finished with SuperLuminova markings that provide the best possible legibility in low light conditions.

The hands are bold and flooded with SuperLuminova, so you can tell the time instantly any time of day or night. (Note: much like a solar panel, the SuperLuminova needs to absorb light in order to glow at night. If your watch has been under a cuff or in the dark during the daytime, its low light performance will be affected.)

We source our movements from the best Swiss manufacturers and only specify movements that have a certain technical elegance, that are maintainable and repairable long-term, and that have

useful features like long battery lives with an end-of-life indicator (the seconds hand steps at 5 second intervals), so your battery doesn't run out unexpectedly.

Our metal bracelets are made using 316L stainless with screw-in link-pins for maximum strength and easy adjustment, and the heavy-duty clasp has a micro-adjustment that you can use to fine-tune the fit, or to extend the length of the bracelet quickly and elegantly for use over a wetsuit.

Our leather and fabric straps are cut from the best quality materials so they're always best-shirt-stylish, lined with nubuck so they're supple and comfy.

Our rubber straps are made from hypo-allergenic non-sticky rubber and are resistant to UV, salt water and ozone, making them perfect for long term outdoor use and particularly suitable if you use your watch in the water.

USING YOUR WATCH AS A COMPASS

Finding South (Northern hemisphere):

Before 12 noon: Point the hour hand at the sun, bisect the angle between the hour hand and the 12 o'clock dial marker moving clockwise round from the hour hand. The imaginary line bisecting the angle points South.

After 12 noon: Point the hour hand at the sun, bisect the angle between the hour hand and the 12 o'clock marker moving anti-clockwise round from the hour hand to the 12h marker. The imaginary line bisecting the angle points South.

Finding North (Southern Hemisphere)

If you are South of the equator, you will instead need to point the 12 o'clock marker at the sun and bisect the angle between the marker and the hour hand following the same rules for before or after 12 noon as above.

Notes: The closer you are to the equator the more difficult it is to gain an accurate approximation of direction. During British summer time you will need to use the 1 o'clock marker instead of the 12 o'clock marker.

RECYCLING

We have chosen to group together with other retailers in joining the 'Distributor Take-Back Scheme'. Through this scheme, we have paid toward the provision of improved recycling facilities for our customers. Customers will be able to take any old electrical equipment to participating civic amenity sites (household waste recycling centres) run by their local councils.

Funding collected through the Distributor Take-Back Scheme has been distributed between all the local authorities in the UK to ensure the provision of improved recycling facilities. Producers of these products will then ensure that deposited items are taken away and recycled.

You can locate your closest participating collection site at recycle-more.co.uk.



We put our heart and soul into every watch we make,
and we hope you absolutely love yours.

Alex and Ian
www.elliottbrownwatches.com
+44 (0)1202 338600

ELLIOT BROWN



www.elliottbrownwatches.com

+44 (0)1202 338600